

Learn To Make 1:12 Kilt/Skirt

by CWPoppets



Materials:

- Cotton Fabric Of Your Choice
- Leather: Small Piece: Black
- Paint Marker: Silver Or Golden
- Pins
- Small Towel and Iron
- Glue (Tacky Glue Or Fabritac)

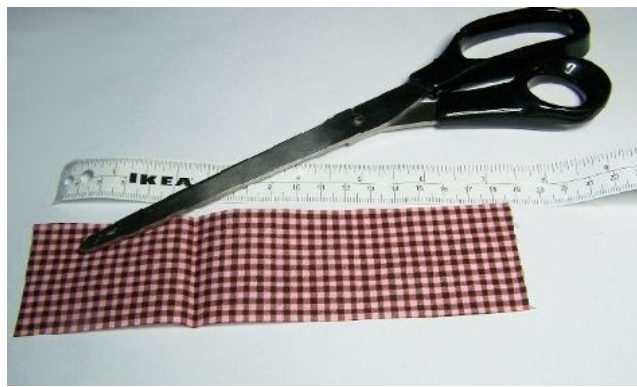
• Tools

📏 - Measuring Tape

📏 - Pencil

Step 1

Take your cotton fabric and cut a strip of 19 cm x 4,5 cm / 7 ½ x 2 inches



Step 2

Cut another strip of 10 x 2 cm / 4 x 3/4 inches. This will be our waist band.



Step 3

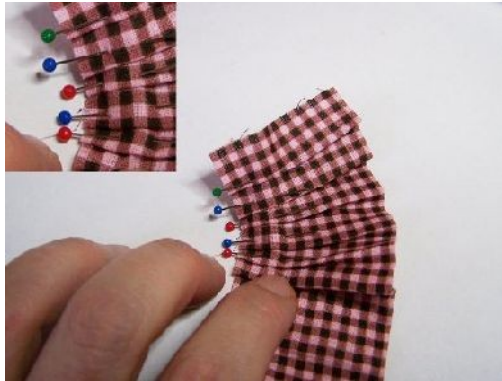
Take the bigger piece of fabric and apply glue of about 1/4 inch (0,5 cm) over the whole length of the skirt. Fold the glued area to the inside. If you have a fabric like mine it's easy to get it evenly by just looking at the squares. If not it might be easier to take a tape/ruler and pencil to get it straight. This will be the rim/bottom of the skirt.



Step 4

Now comes the tricky part ! You need to get folds into your kilt/skirt. Take the fabric and make a fold

approximately every $\frac{1}{4}$ inch (0,5 cm). Get it in form by using your fingernails or a ruler if you have very soft fingernails and keep them in form with pins. Try to get the side with the already glued bottom a little bit wider then the side where the waist will be.



Step 5

I've attached another picture to show you what I mean. While you do the folds pre-heat your iron.



Step 6

Glue the ends of both sides inside when your folds are all in place.



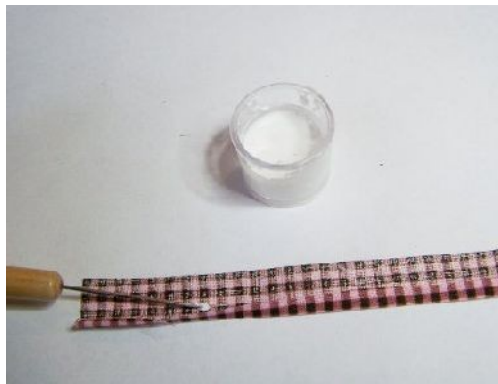
Step 7

When you have all folds in place take the towel, place the kilt on it and iron the folds



Step 8

Now take the waist band (the smaller fabric strip) and glue one side to about $\frac{1}{4}$ inch (0,5 cm) inside.



Step 9

Take the small strip and glue the side that you just rimmed onto the bigger fabric. Leave about $\frac{1}{4}$ inch (0,5 cm) on both ends of the bigger fabric. If you have done everything right you should have enough fabric showing on both sides. :-)



Step 10

Fix it with two or three pins. Let it dry a bit.



Step 11

Now take the skirt, turn it around and fold the waist band inside. It should be about 1/4 inches (0,5 cm) wide.



Step 12

In the meantime take the leather and cut two tiny bits out of it. You can make a triangle at the end or a round end. Whatever you like. Just make sure they have a size that both fit onto the upper part of the kilt. If not use just one piece of leather.



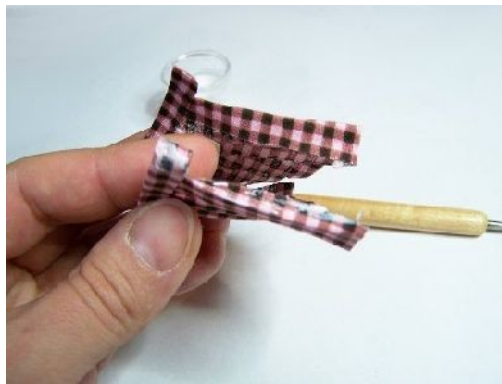
Step 13

Glue it onto the bigger piece of fabric



Step 14

Fold the open ends on both sides



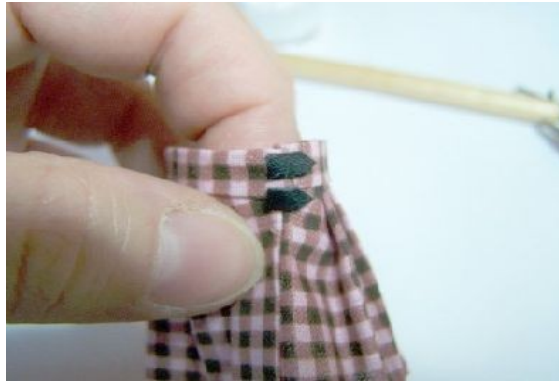
Step 15

Now glue the folded ends together



Step 16

Glue the two leather pieces on the waist rim that you just closed.



Step 17

Paint some squares or points onto the leather with your marker.



Step 18

Tata!!! Finished!

